



УУЛ УУРХАЙ  
ХҮНД ҮЙЛДВЭРИЙН ЯАМ



# Towards Sustainable Mining (TSM): Options for Mongolia

**Glenn Kendall**

СЕСМИМ төслийн

Уул уурхайн Бодлого,

Зохицуулалтын Зөвлөх

January 16, 2018



Global Affairs  
Canada

Affaires mondiales  
Canada

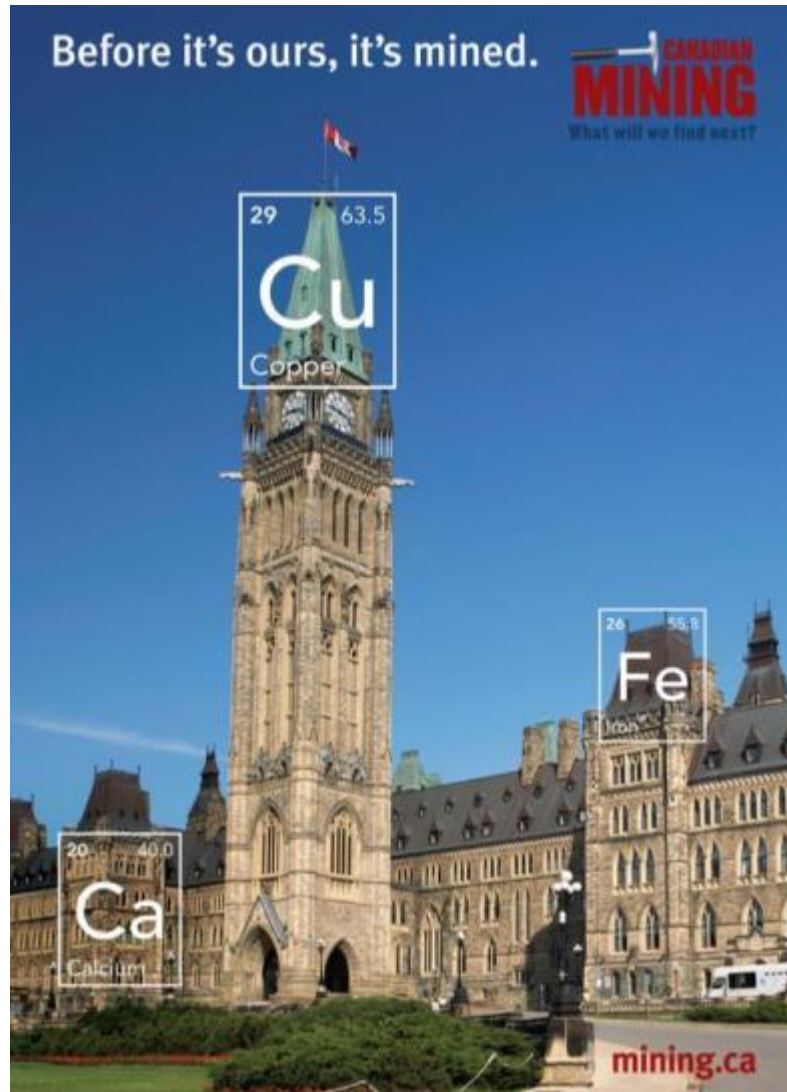


# Objectives

- I. Present the main elements of the Mining Association of Canada's Towards Sustainable Mining (TSM) initiative
- II. Discuss how TSM might be implemented in the Mongolian context

# Why TSM was Adopted

- To respond to demands from society for more sustainable mining practices
  - Community engagement
  - Environmental stewardship
  - Climate change
- To reduce demands from government and increased regulation
- To improve the efficiency, performance and image of the mining industry....risk management



- ◆ The national voice of the Canadian mining industry since 1935.
- ◆ Members are engaged in mineral exploration, mining, smelting, refining and semi-fabrication.
- ◆ Member companies account for the vast majority of Canada's output of metals and major industrial minerals.
- ◆ Associate members comprise a wide range of services and equipment supplied to the mining industry.
- ◆ Towards Sustainable Mining Initiative (TSM) – stewardship, social license and encourages excellence and continuous improvement.

TSM's core strengths are:

- ◆ **Accountability** – Assessments are conducted at the facility level where mining activity takes place – the only program in the world to do this in our sector
- ◆ **Transparency** – Annual reporting against 23 indicators with independent verification every three years
- ◆ **Credibility** – Includes ongoing consultation with a national Community of Interest Advisory panel to improve industry performance and shape TSM for continual advancement



## ***COI Advisory Panel***

Aboriginal peoples

Environmental NGO

Economic/community development

Social NGO including faith based groups

Finance/investment

International development

Labour/workplace

Media/communications

MAC Board of Directors

Junior Mining Company Representative

- ◆ Meets twice per year
- ◆ Work of Panel publicly available on the MAC website
- ◆ Annual COI Panel Statement published in *TSM Progress Report*

## Environmental Stewardship



Tailings Management  
Biodiversity Conservation Management

## Communities & People



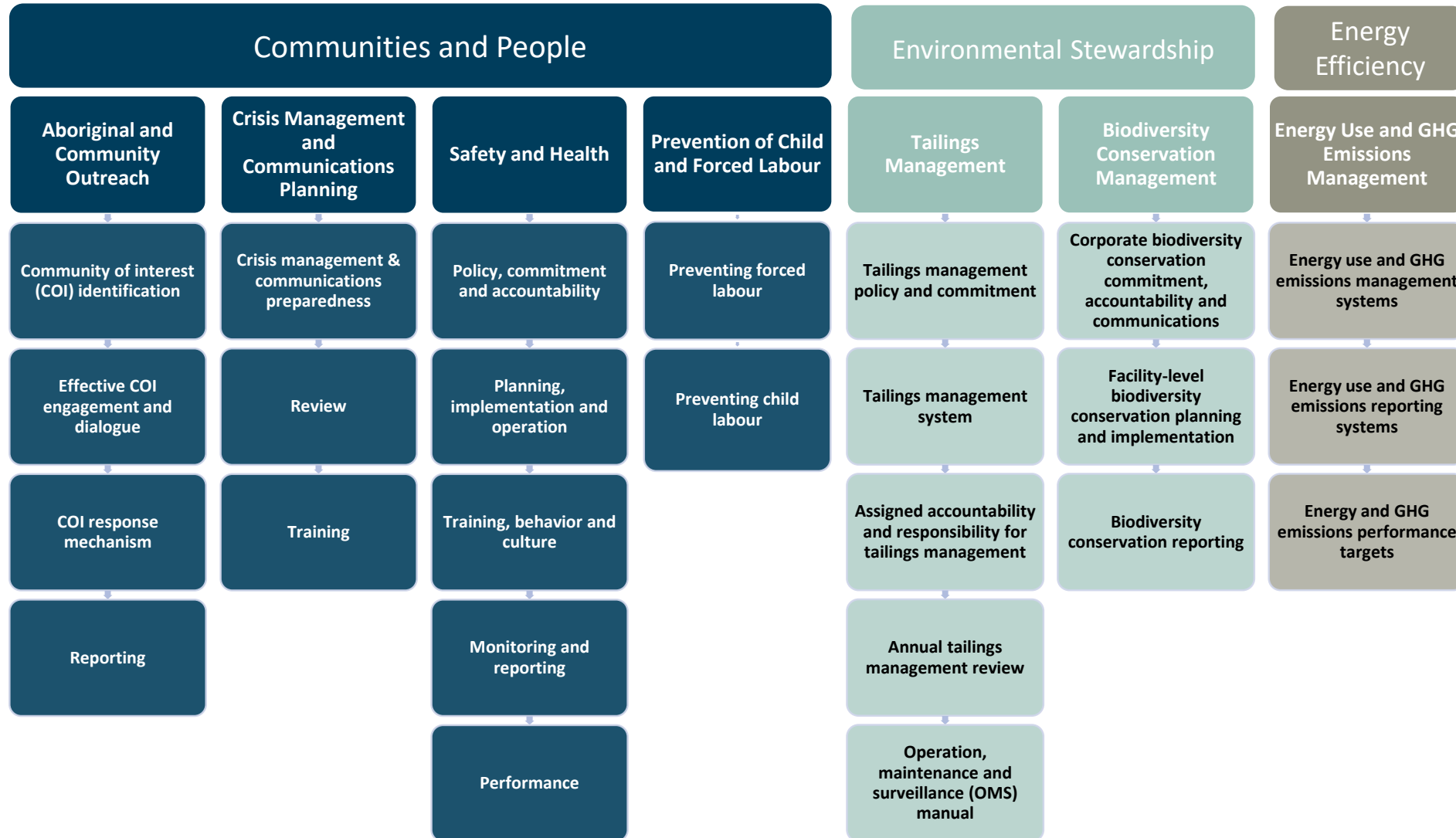
Aboriginal & Community Outreach  
Safety & Health Management  
Crisis Management & Communications  
Planning  
Preventing Child and Forced Labour

## Energy Efficiency



Energy Use & Greenhouse Gas Emissions  
Management

**Community of Interest Advisory Panel**





AAA

- Excellence and Leadership

AA

- Integration into management decisions and business functions

A

- Systems/processes are developed and implemented

B

- Procedures exist but are not fully consistent or documented; systems/processes planned and being developed

C

- No systems in place; activities tend to be reactive; procedures may exist but they are not integrated into policies and management systems

# Understanding TSM Protocols – An Example

- Measurable, specific criteria for each level of performance
  - ‘C’ through ‘AAA’ (‘C’ “really bad”, ‘A’ “world leading”)
- Self-assessment checklist available

## Safety and Health

- I. Policy Commitment and Accountability
- II. Planning, Implementation and Operation
- III. Training, Behavior and Culture
- IV. Monitoring and Reporting
- V. Performance

# Performance: Assessment Criteria

## LEVEL CRITERIA

C

No safety and health performance targets have been established for employees of the facility.

B

Safety and health performance targets are set for employees of the facility. Targets may not include performance of contractors. Targets are communicated to employees.

A

Performance targets include on-site contractors. Facility management is involved in reviewing and improving performance relative to targets. Performance results are communicated to employees and on-site contractors. The facility has not had a fatality in the reporting year.

AA

Performance targets are set for both leading and lagging indicators. Senior company management reviews performance against facility targets and associated improvement plans. Facility (or company) benchmarks its safety and health performance against its peers.

AAA

The facility has consistently met its continual improvement performance targets (at least 3 of the last 4 years) and is fatality free over the entire four-year period. The facility externally audits its safety and health performance to ensure accuracy

## Self-assessment

- ◆ Annual

## External verification

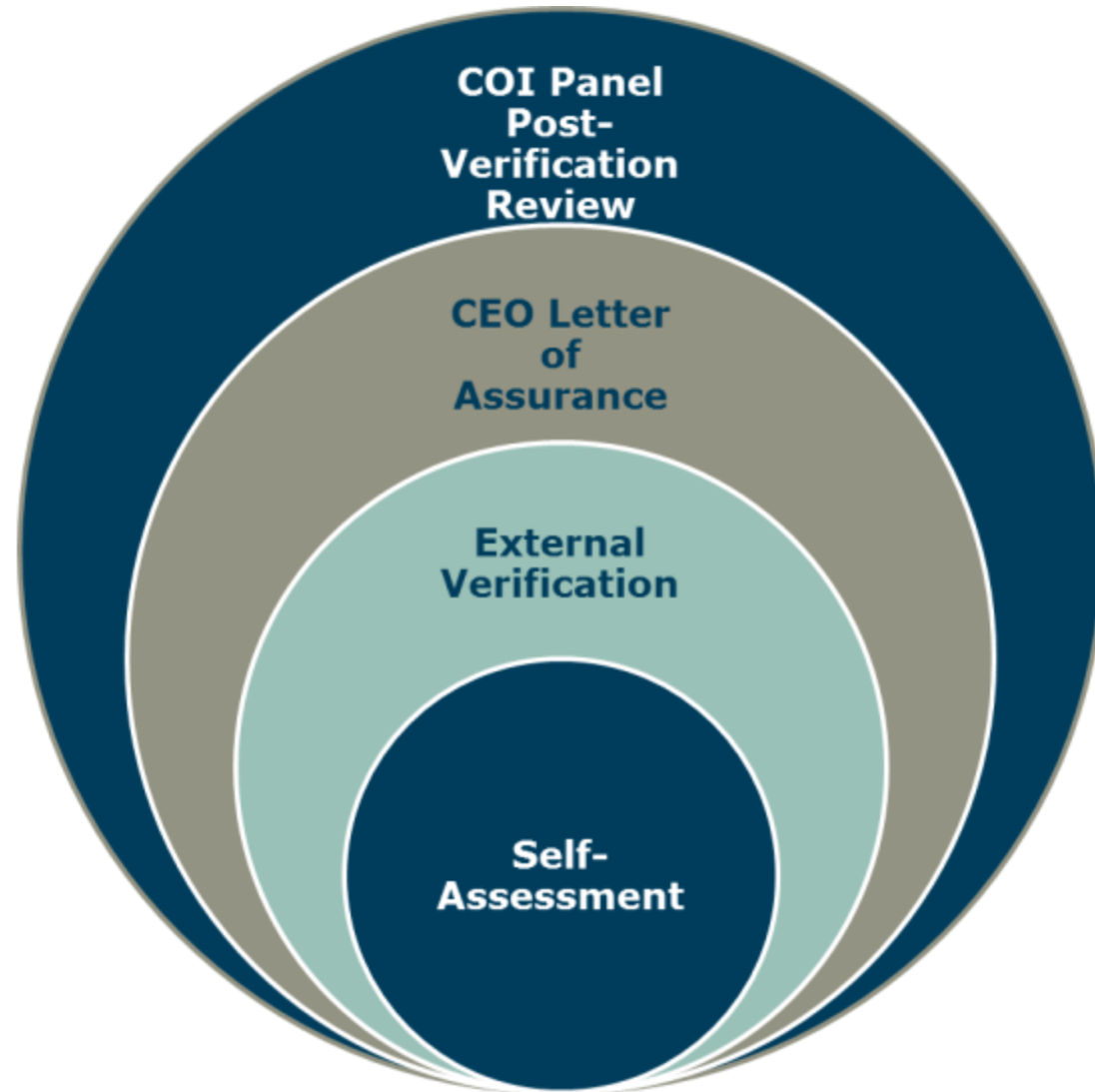
- ◆ Every three years

## CEO letter of assurance

- ◆ Posted on MAC website in year of external verification

## COI Panel Review

- ◆ 2-3 companies each year



- ◆ In November, 2016, the MAC Board directed the TSM Initiative Leaders to develop a new water protocol. This work is currently underway.
- ◆ The approach is to build on the Finnish TSM Water Protocol, ICMC's Water Position Statement and the Alliance for Water Stewardship Council Standard.
- ◆ The Protocol currently has four indicators at the moment:
  1. **Water governance** – focusing on responsibilities, accountabilities and commitments
  2. **Operational Water Management** – focusing on water balance, identification of impacts, risks and opportunities, monitoring, setting and tracking objectives and contingency planning for operational incidents and extreme events
  3. **Catchment-Level Water Management** - focusing on engaging with other water users in the catchment and identifying catchment level risks and opportunities
  4. **Water Stewardship Reporting and Disclosure** – focusing on internal and external reporting

- ◆ In February MAC adopted a new membership commitment relating to security and human rights to compliment the TSM commitment:
  - ◆ *As members of the Mining Association of Canada, all participating companies that rely upon private or public security forces commit to implementing a human rights and security approach consistent with the Voluntary Principles on Security and Human Rights (VPs) and based on a determination of risk at facilities that they control.*
  
- ◆ Key elements of this commitment include:
  - ◆ The creation of a communities of practice forum for MAC member security practitioners
  - ◆ A reporting element focused on implementation and assurance
  - ◆ Recognized equivalencies for ICMM and World Gold Council

TSM has been adopted by the Mining Association of BC, the Quebec Mining Association, the Finnish Mining Association (FinnMin), the Argentinean Chamber of Mining Entrepreneurs (CAEM) and the Botswana Chamber of Mines.

**Each implementing association is required to have something in place to meet each of the following seven components:**

1. Guiding Principles
2. Performance Indicators
3. Facility Level Reporting
4. Independent Verification
5. Public Reporting of Facility Level Reporting
6. Condition of Membership
7. Community of Interest Advisory Body



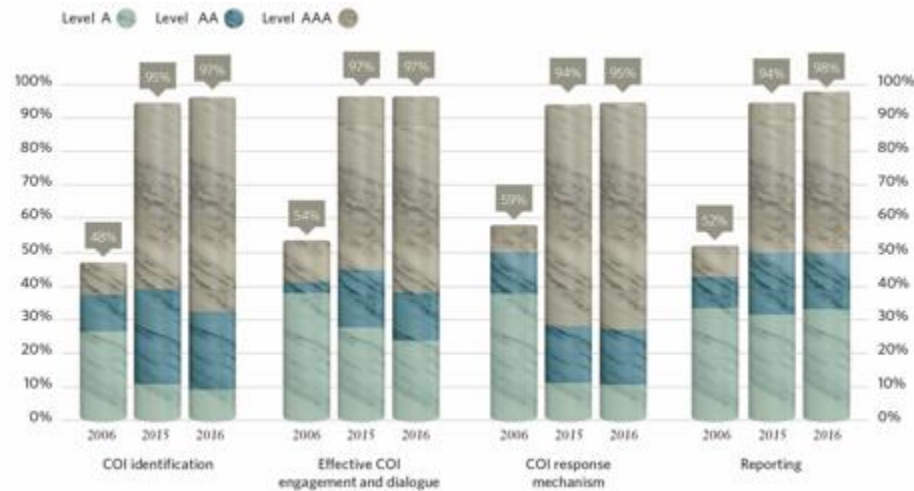
**It is left up to the association, in conjunction with their Community of Interest Advisory Body, to decide how best to implement each item**

- ◆ Publication of results
  - ◆ company specific
  - ◆ aggregated for the membership as a whole
- ◆ On website (www.mining.ca)
- ◆ Useful for comparison between companies (and peer pressure)



2015 TSM Results

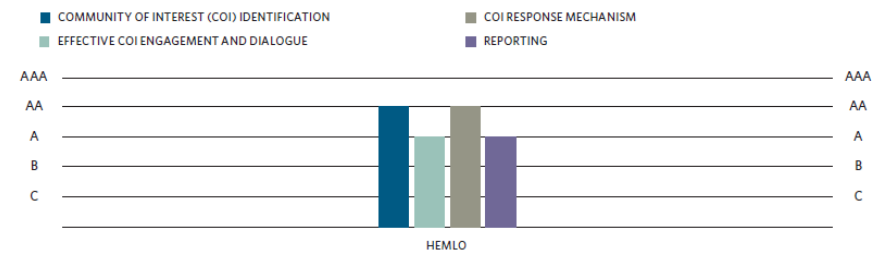
Barrick Gold Corporation



Crisis Management Planning Assessment

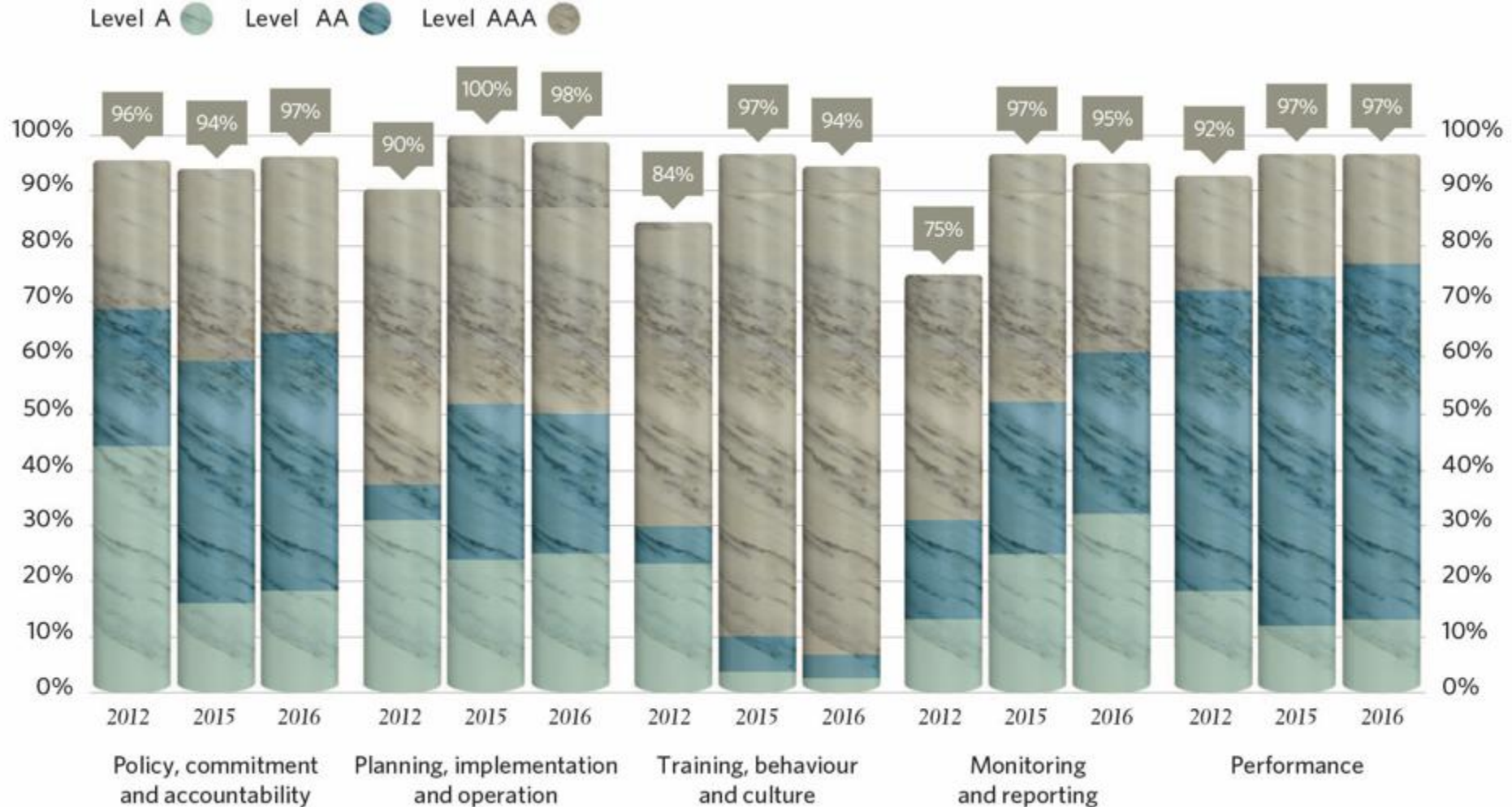
| FACILITY                 | PREPAREDNESS                        | REVIEW                              | TRAINING                            |
|--------------------------|-------------------------------------|-------------------------------------|-------------------------------------|
| BARRICK GOLD CORPORATION | <input checked="" type="checkbox"/> | <input checked="" type="checkbox"/> | <input checked="" type="checkbox"/> |
| HEMLO                    | <input checked="" type="checkbox"/> | <input checked="" type="checkbox"/> | <input checked="" type="checkbox"/> |

Aboriginal and Community Outreach Assessment

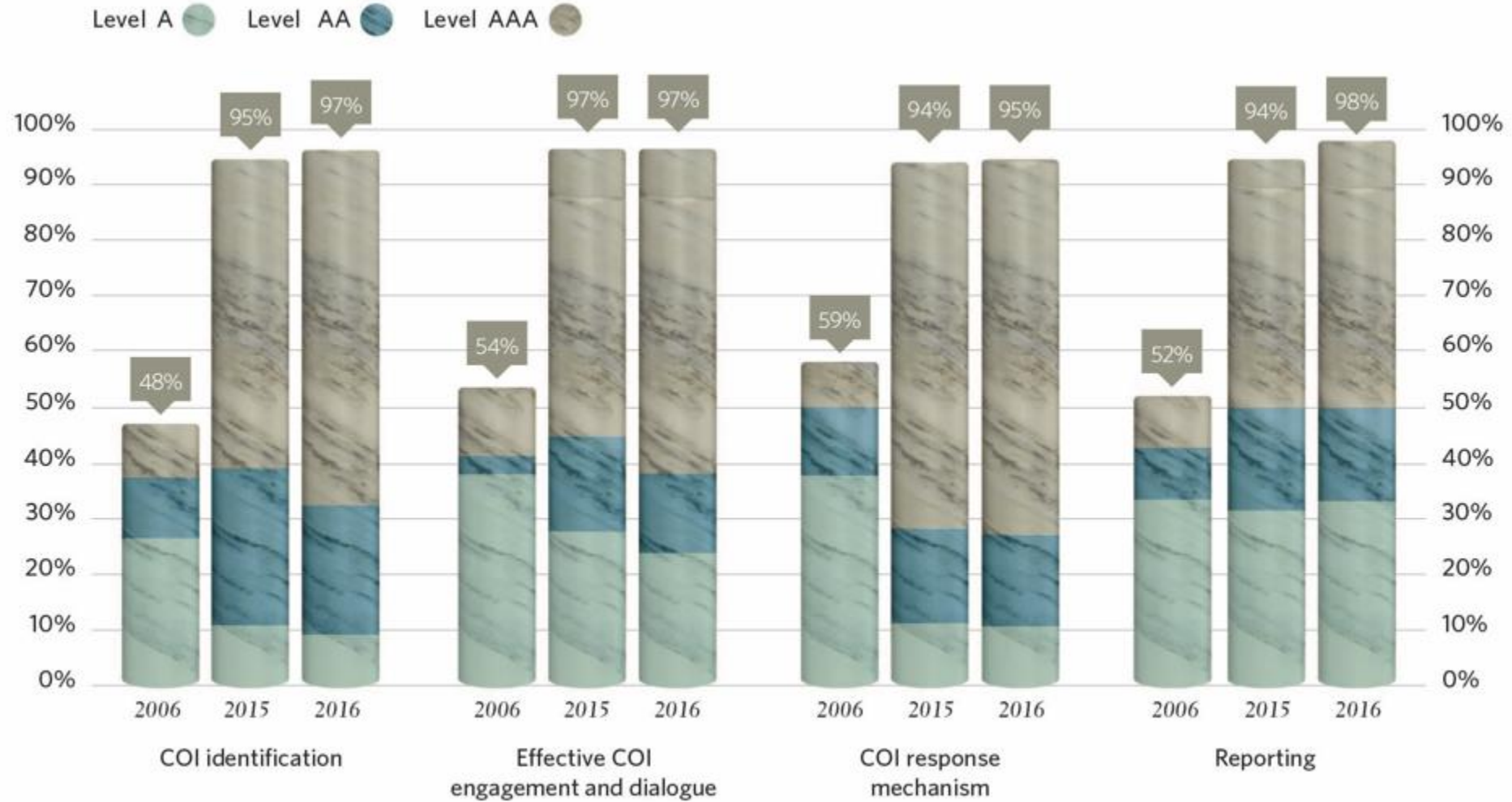




**Safety and Health Assessments  
Percentage of Facilities at a Level A or Higher 2006, 2015 and 2016**

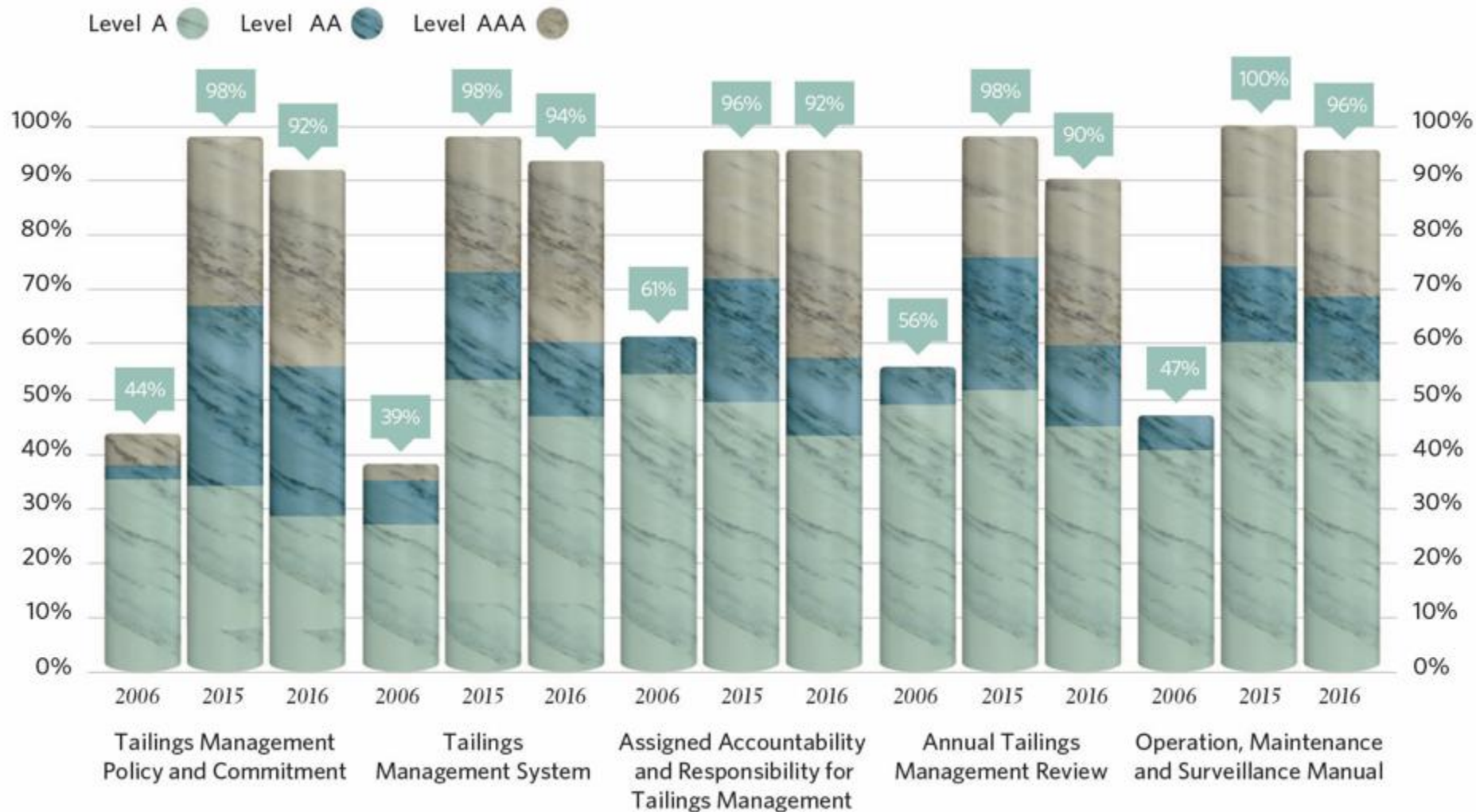


## Aboriginal and Community Outreach Assessments Percentage of Facilities at a Level A or Higher 2006, 2015 and 2016

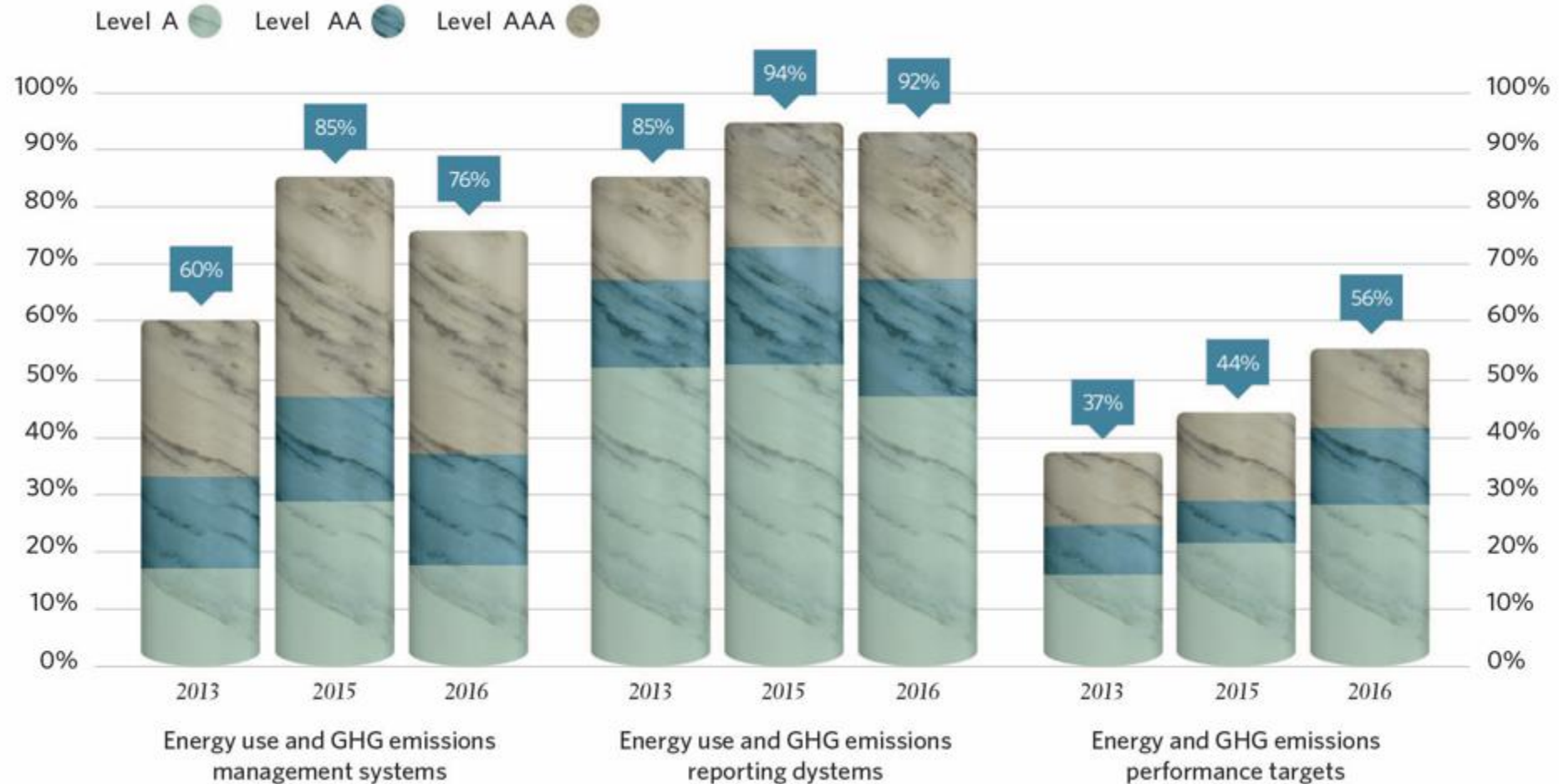


## 2016 AGGREGATE RESULTS: ENVIRONMENTAL STEWARDSHIP

Tailings Management Assessments  
Percentage of Facilities at a Level A or Higher 2006, 2015 and 2016



**Energy Use and GHG Emissions Management Assessments**  
Percentage of Facilities at a Level A or Higher 2006, 2015 and 2016



**TSM implemented nationally:**

1. Canada
2. Finland
3. Botswana
4. Argentina

**Countries with mines implementing TSM, but not yet reporting:**

1. Australia
2. Greece

**Additional countries with mines reporting on TSM indicators:**

1. Burkina Faso
2. Mexico
3. USA
4. Peru
5. Surinam
6. Turkey
7. Australia

**National associations and governments that have sought to learn more about TSM**

1. Brazil +
2. Chile + \*
3. China +
4. Ecuador \*
5. European Union \*
6. Greenland + \*
7. Indonesia \*
8. Norway \*
9. Spain +
10. Sweden + \*
11. Cuba +\*
12. Philippines +

\* - Interest from government  
+ - Interest from Association

# TSM Video Overview

<http://mining.ca/towards-sustainable-mining/tsm-videos>

# Group Discussion and Report Back

Task: Each group to discuss the following questions:

- I. Key Strengths and Weaknesses of TSM (15 min.)
- II. How TSM Could be Adopted in Mongolia (25 min.)  
(preliminary ideas)
  - I. Where to Start (priority areas)
  - II. Elements of Mongolia's TSM  
(e.g. Principles, Issue Areas, Protocols)
- III. Suggested Next Steps (10 min.)

Thank-you for your participation!